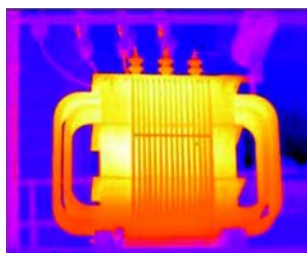


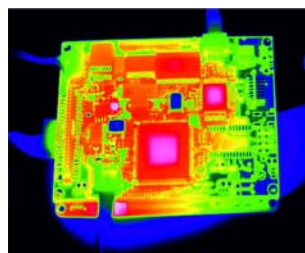
The professional **THT50** represents the top of the existing models of infrared cameras that HT ITALIA presents on the market. The instrument is designed to be used in a similar way to a common digital camera, the shape is very similar, in order to put at ease the operator in each situation. The IR sensor with high resolution (384 x 288pxl), the display color interactive touch screen and the possibility to use in "remote" way are just some of the many functions available in the instrument which provides an absolute reference for the implementation of detailed measures report and presentation at professional thermographic surveys



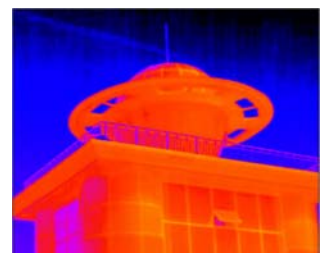
Predictive maintenance



Electrical inspections



Research &amp; development



Building diagnostics

## Features and benefits

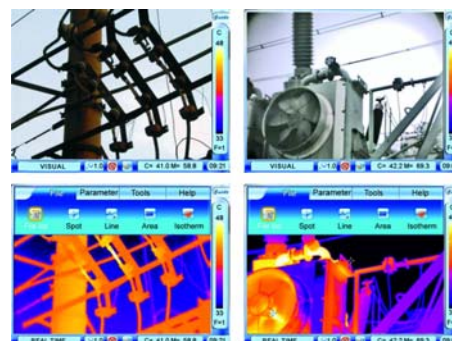


### Infra fusion Pip

The new thermal fusion technology allows you to overlay the thermal image directly on the corresponding visual image. It would help you to identify where the problem exactly is and give the solution.

### “Touch screen” display

The model permits to performs measurement operations and saving imagers more than very speed setup of parameter in complete interactive mode thanks to special TFT “touch screen” display



### High-resolution image

Utilizing high performance 384 x 288 IR detector, the THT50 offers extraordinary high-resolution, high-sensitivity and high-accuracy real-time noise-free 16-bit thermal images.

## 1. IMAGING PERFORMANCE

<b>Thermal</b>	
Detector type	UFPA
Spectral range	8 ÷ 14μm
Resolution (pxl)	384 x 288, 25μm
Thermal sensitivity	≤0.08°C @ 30°C
Field of view (FOV)	22° x 16° lens 25mm
Focus	Automatic / Manual
Image frequency	50 Hz PAL / 60 Hz NTSC
Electronic zoom	x1 ÷ x10 in continuous mode
<b>Visual</b>	
Built-in Digital Video	CMOS sensor, 1280x1024pxl (1.3Mpxl), 2 <sup>15</sup> colours

## 2. IMAGING DISPLAY

External display	3.5" LCD VGA 640 x 480pxl touch screen / Viewfinder 0.6" OLED
Video output	50/60Hz PAL / NTSC, 60Hz VGA
Infra fusion PiP	Visual and IR blending
Built-in flash memory	Yes

## 3. MEASUREMENT

Temperature range	-20°C ÷ 600°C
Accuracy	±2%rdg or ±2°C
Emissivity correction	Variable from 0.01 to 1.00, on-screen
Measurement features	Automatic correction based on distance, relative humidity and atmospheric transmission and external optics
Measurement modes	Hot/cold spot, alarm conditions, drawing up to 10 mobile points, lines, histograms, up to 10 mobile areas max/min, isotherms

## 4. IMAGE STORAGE

Media	Removable 2 GB mini SD card
File format	JPEG with analysis records
Number of image stored	Up to 1000
Voice annotation	60 s / image + text

## 5. LASER LOCATOR

Classification type	Class 2
---------------------	---------

## 6. PC CONNECTION

USB 2.0	For image transfer and live video transfer to PC
---------	--

## 7. POWER SYSTEM

Battery type	1x7.4V 2800mAh Li-ION
Charging system	In camera or in battery charger
Battery life	> 2.5 hours
External power	AC adapter 110/220VAC, 50/60Hz / 12VDC

## 8. ENVIRONMENT

Operating temperature	-20°C ÷ 60°C
Operating humidity	10% ÷ 95%HR
Storage temperature	-20°C ÷ 60°C
Storage humidity	10% ÷ 95%HR
IP degree	IP54 according to IEC529
Shock	25G, according to IEC68-2-29
Vibration	2G, according to IEC68-2-6

## 9. DIMENSIONS

Size (L x W x H)	186 x 106 x 83mm
Weight [kg]	1.1kg (battery included)